

HENDERSONVILLE HIGH SCHOOL

Community Meeting

Thursday, October 3, 2019

7:00pm

A LITTLE BACKGROUND

January 2019

DRAFT ADVANCE PLANNING REPORT

Hendersonville High School

January 7, 2019



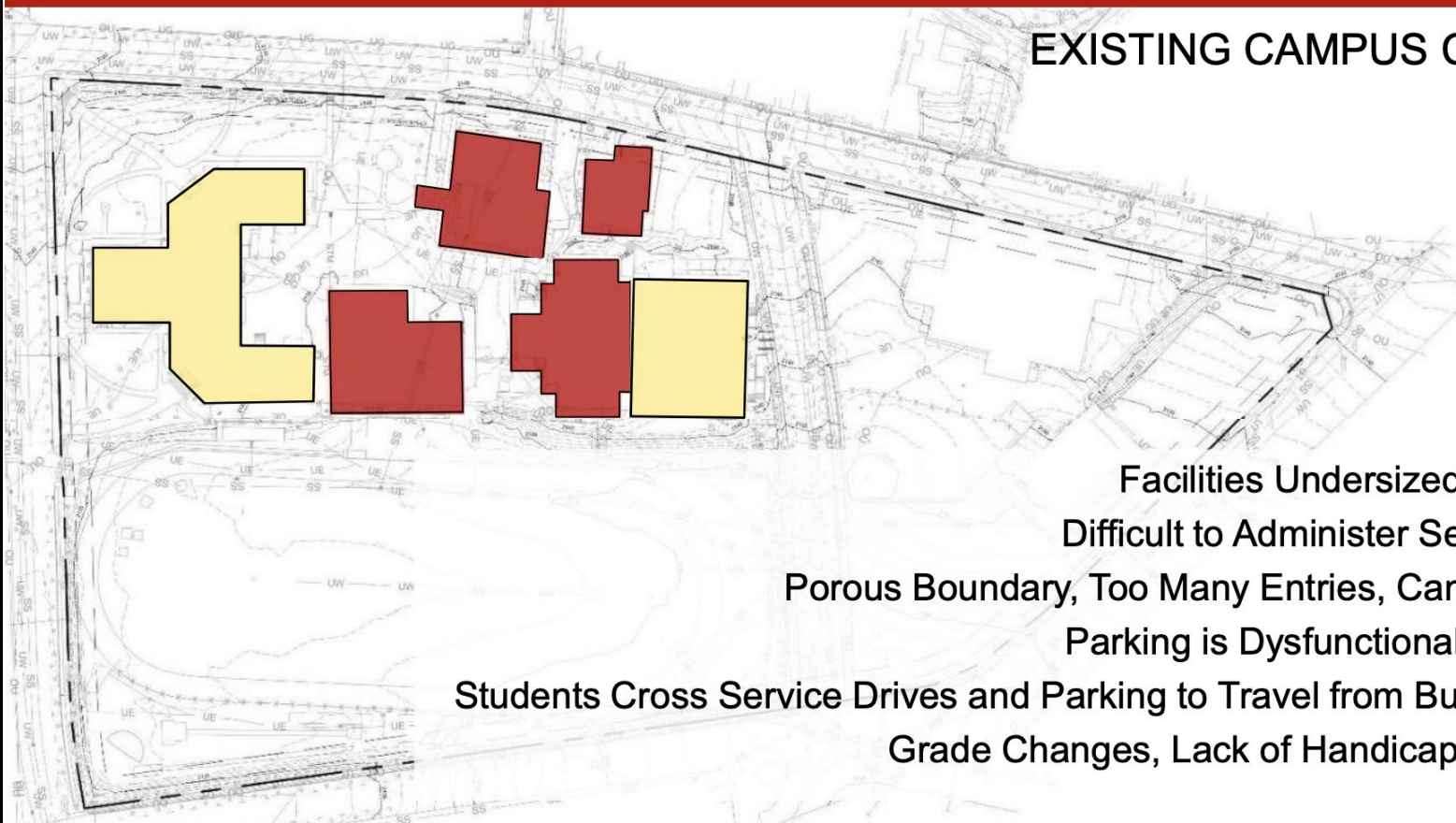
PLANNING PROCESS

THE DESIGN & PLANNING TEAM CONSENSUS

- ✓ Plan Supports the Program Requirements of Henderson County Public Schools for a 900 Student High School with 1,000 Student Core Capacity
- ✓ Plan Provides State of the Art Facilities for HHS Students
- ✓ Plan Has Support from Local and State Review Agencies
- ✓ Plan Can Be Implemented Within Budget
- ✓ Stillwell Building Can Continue to Serve Future Generations of Students
- ✓ School Can Continue to Operate Safely During Construction

PROPOSED PLAN

EXISTING CAMPUS CHALLENGES



- Facilities Undersized and Inadequate
- Difficult to Administer Separate Buildings
- Porous Boundary, Too Many Entries, Campus Not Secure
- Parking is Dysfunctional and Inadequate
- Students Cross Service Drives and Parking to Travel from Building to Building
- Grade Changes, Lack of Handicapped Accessibility

PROPOSED PLAN

**NEW BUILDINGS ON LEVEL GROUND
AT THE HEART OF CAMPUS**

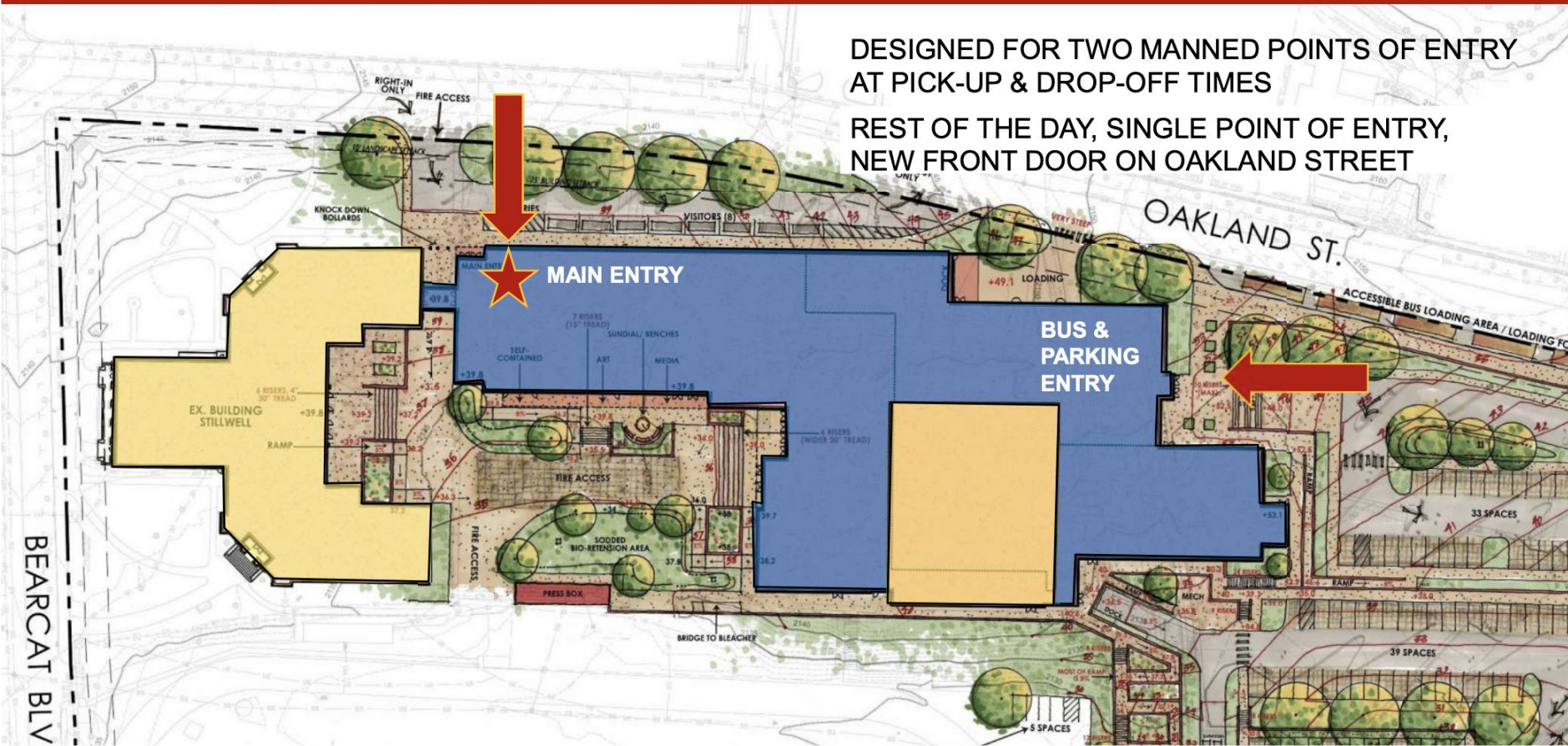


**PARKING TERRACED ON STEEPER
NORTH END OF CAMPUS**

PROPOSED PLAN

DESIGNED FOR TWO MANNED POINTS OF ENTRY
AT PICK-UP & DROP-OFF TIMES

REST OF THE DAY, SINGLE POINT OF ENTRY,
NEW FRONT DOOR ON OAKLAND STREET



PROPOSED PLAN: FIRST FLOOR

MAIN ENTRY & COURTYARD ACCESS

ADMIN & GUIDANCE

BATHROOMS

SELF-CONTAINED

MEDIA CENTER & ART

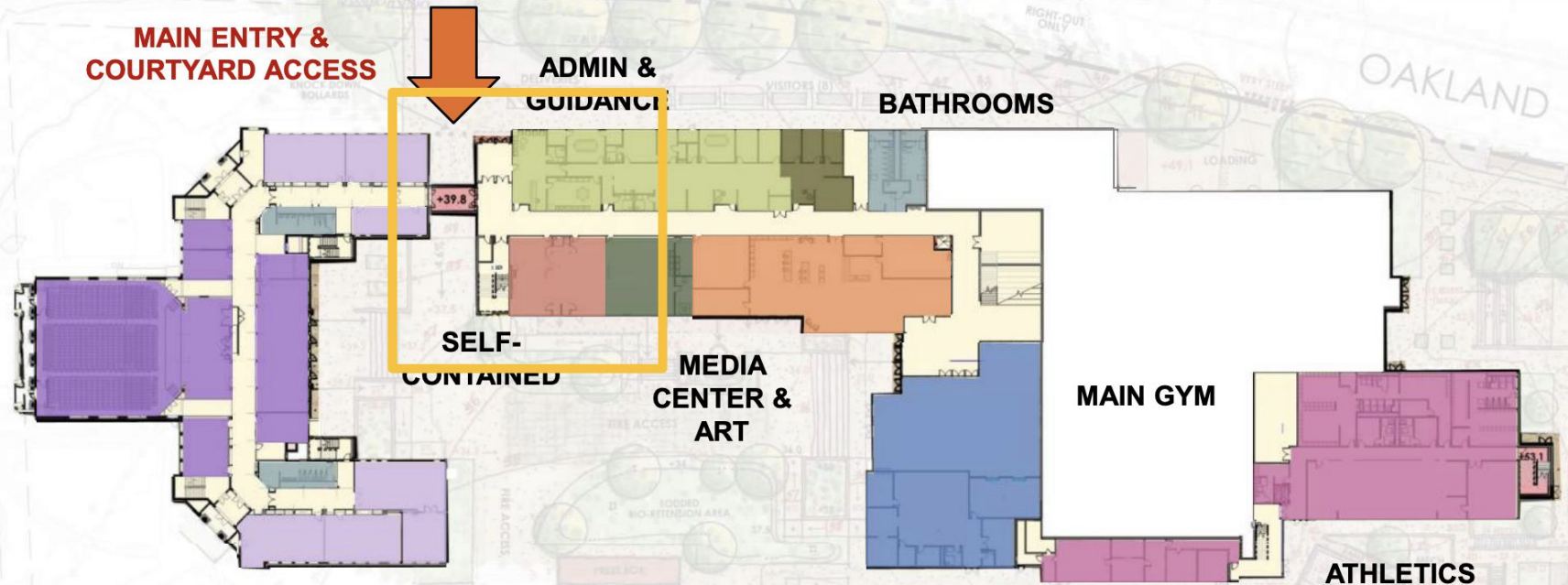
MAIN GYM

ATHLETICS SUPPORT

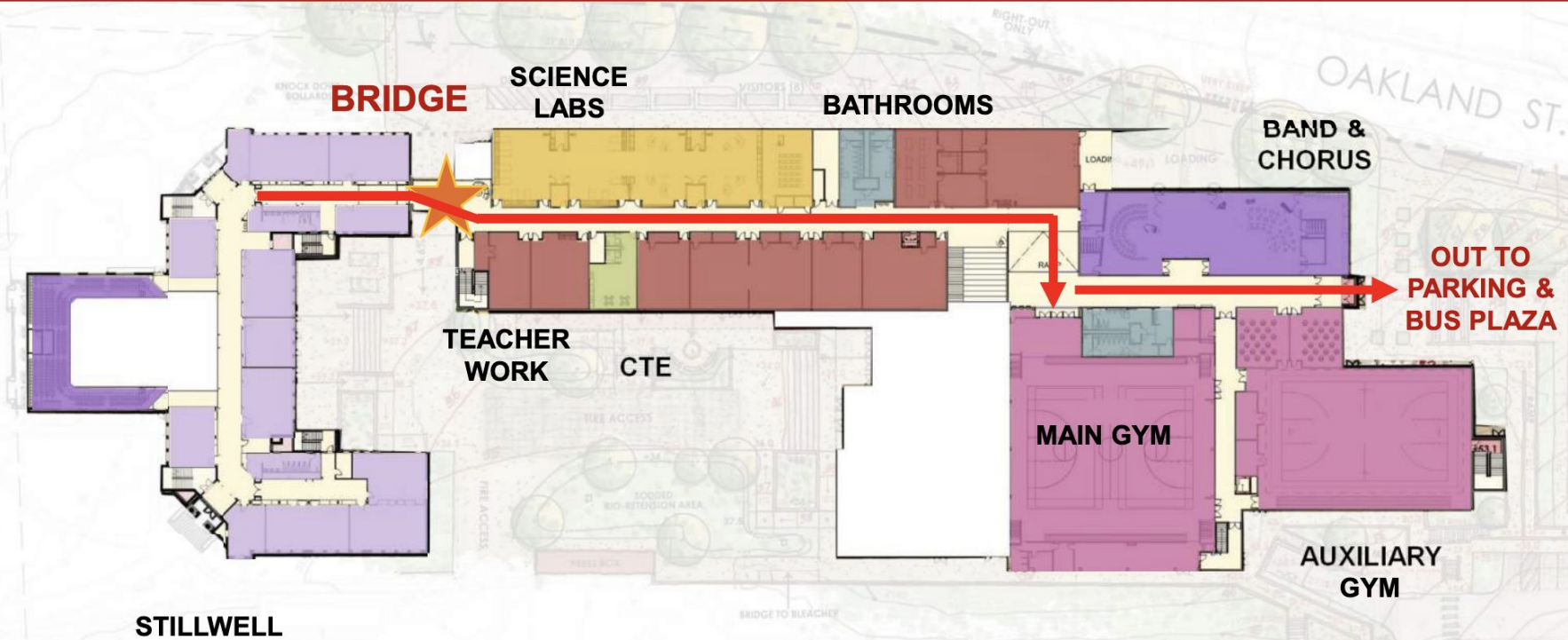
STILLWELL

DINING & KITCHEN

FIRST FLOOR



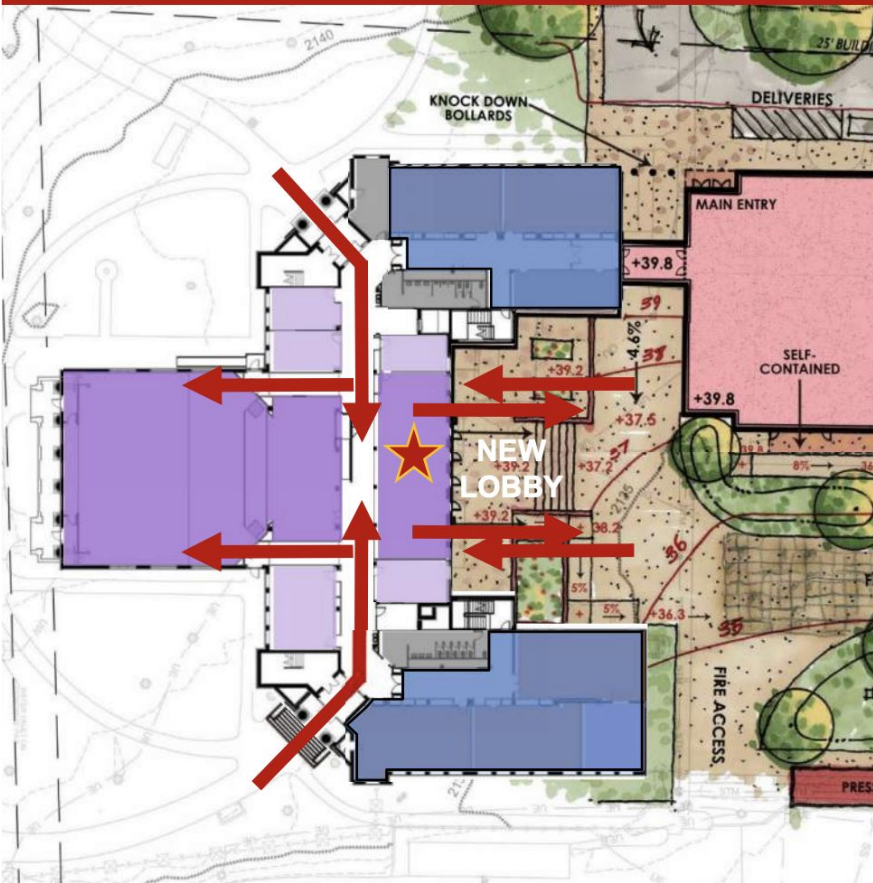
PROPOSED PLAN: SECOND FLOOR



SECOND FLOOR

STUDENTS TRAVEL FROM ONE END TO THE OTHER WITHOUT LEAVING THE SECURITY OF THE BUILDING

PROPOSED PLAN: STILLWELL AUDITORIUM



AUDIENCE ENTERS AT CORNERS AND COURTYARD, ENTERS AUDITORIUM FROM NEW LOBBY

NEW CORRIDOR DOORS, SO WINGS CAN BE CLOSED OFF DURING PERFORMANCES, BATHROOMS STILL ACCESSIBLE

NEW LOBBY = EVENTS SPACE, OPENS ONTO TERRACED COURTYARD

ADDITIONAL AUDITORIUM SEATING BY RECONFIGURING STAGE & OLD LOBBY

PROPOSED PLAN: ATHLETIC FACILITIES



LARGER GYM LOBBY &
PUBLIC BATHROOMS



NEW AUXILIARY GYM

2 HEALTH CLASSROOMS,
SPACE CONVERTS TO
WRESTLING ROOM

NEW STAIRS, ELEVATOR TO
LOWER LEVEL


WHAT'S HAPPENED SO FAR?

Activity	Start	Completion
Early Site and Utility Work/Minimal Vocational Reno	June 14, 2019	August 23, 2019
Serving/Dining moves into Vocational	December 20, 2019	January 5, 2020
Phase 1 Entered – Band, Cafeteria and Site Demo (No Gyms)	January 2, 2020	
Phase 2 Entered - Gyms Closed	July 1, 2020	
Move into New Gym/Aux Gym	July 1, 2021	
Move into New Addition/Additional Vocational Reno	December 20, 2021	January 5, 2022
Auditorium Closed for Renovations	September 1, 2021	March 1, 2022
Stillwell Closed for Renovations	January 2, 2022	December 20, 2022
Move into New Stillwell	December 20, 2022	January 2, 2023
Demo Vocational/Complete Courtyard	January 2, 2023	August 15, 2023

Activity	Start	Completion
Early Site and Utility Work/Minimal Vocational Reno 	June 14, 2019	August 23, 2019
Serving/Dining moves into Vocational 	December 20, 2019	January 5, 2020
Phase 1 Entered – Band, Cafeteria and Site Demo (No Gyms)	January 2, 2020	
Phase 2 Entered - Gyms Closed	July 1, 2020	
Move into New Gym/Aux Gym	July 1, 2021	
Move into New Addition/Additional Vocational Reno	December 20, 2021	January 5, 2022
Auditorium Closed for Renovations	September 1, 2021	March 1, 2022
Stillwell Closed for Renovations	January 2, 2022	December 20, 2022
Move into New Stillwell	December 20, 2022	January 2, 2023
Demo Vocational/Complete Courtyard	January 2, 2023	August 15, 2023

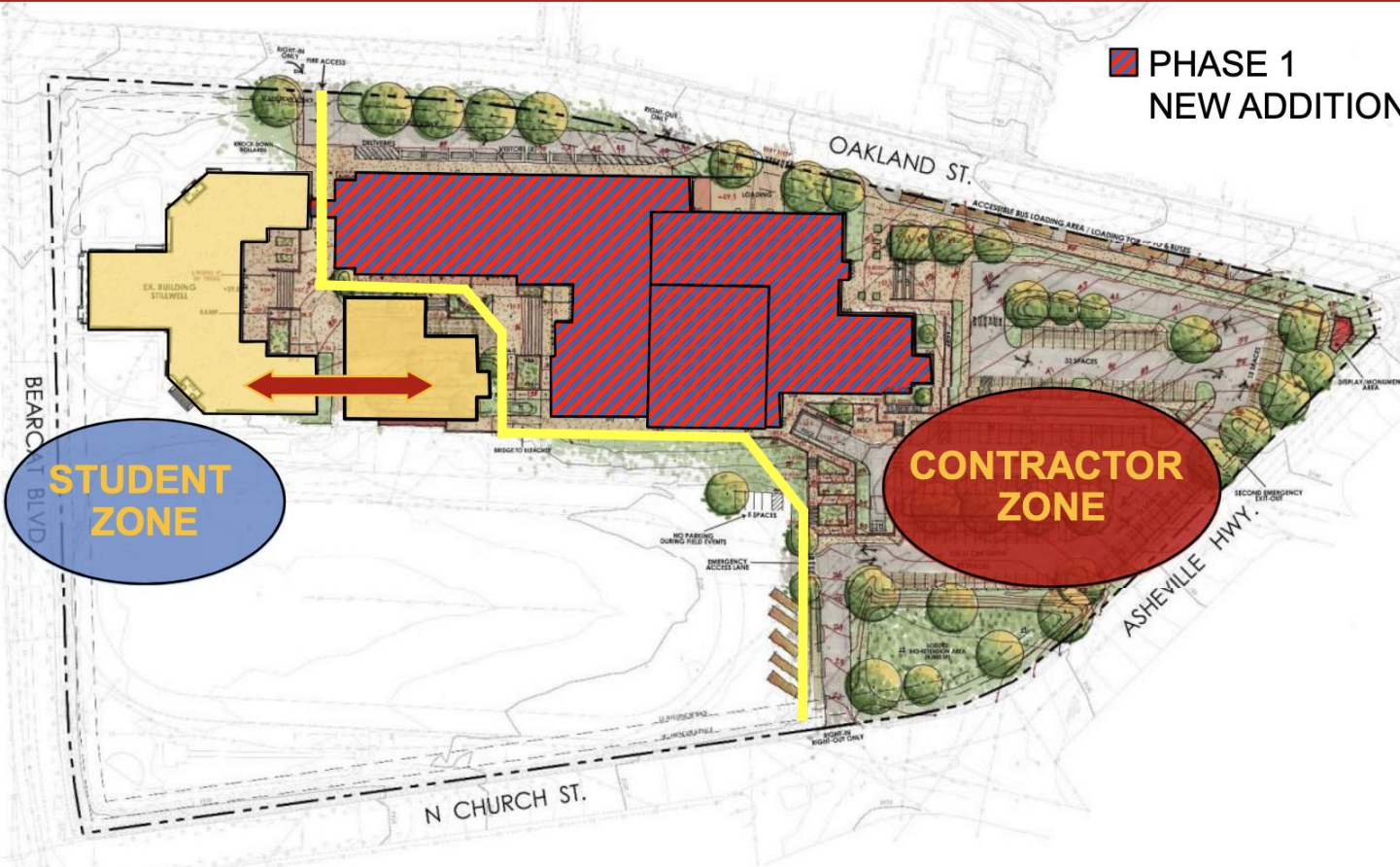
WHAT'S NEXT?

Activity	Start	Completion
Early Site and Utility Work/Minimal Vocational Reno	June 14, 2019	August 23, 2019
Serving/Dining moves into Vocational	December 20, 2019	January 5, 2020
Phase 1 Entered – Band, Cafeteria and Site Demo (No Gyms)	January 2, 2020	
Phase 2 Entered - Gyms Closed	July 1, 2020	
Move into New Gym/Aux Gym	July 1, 2021	
Move into New Addition/Additional Vocational Reno	December 20, 2021	January 5, 2022
Auditorium Closed for Renovations	September 1, 2021	March 1, 2022
Stillwell Closed for Renovations	January 2, 2022	December 20, 2022
Move into New Stillwell	December 20, 2022	January 2, 2023
Demo Vocational/Complete Courtyard	January 2, 2023	August 15, 2023

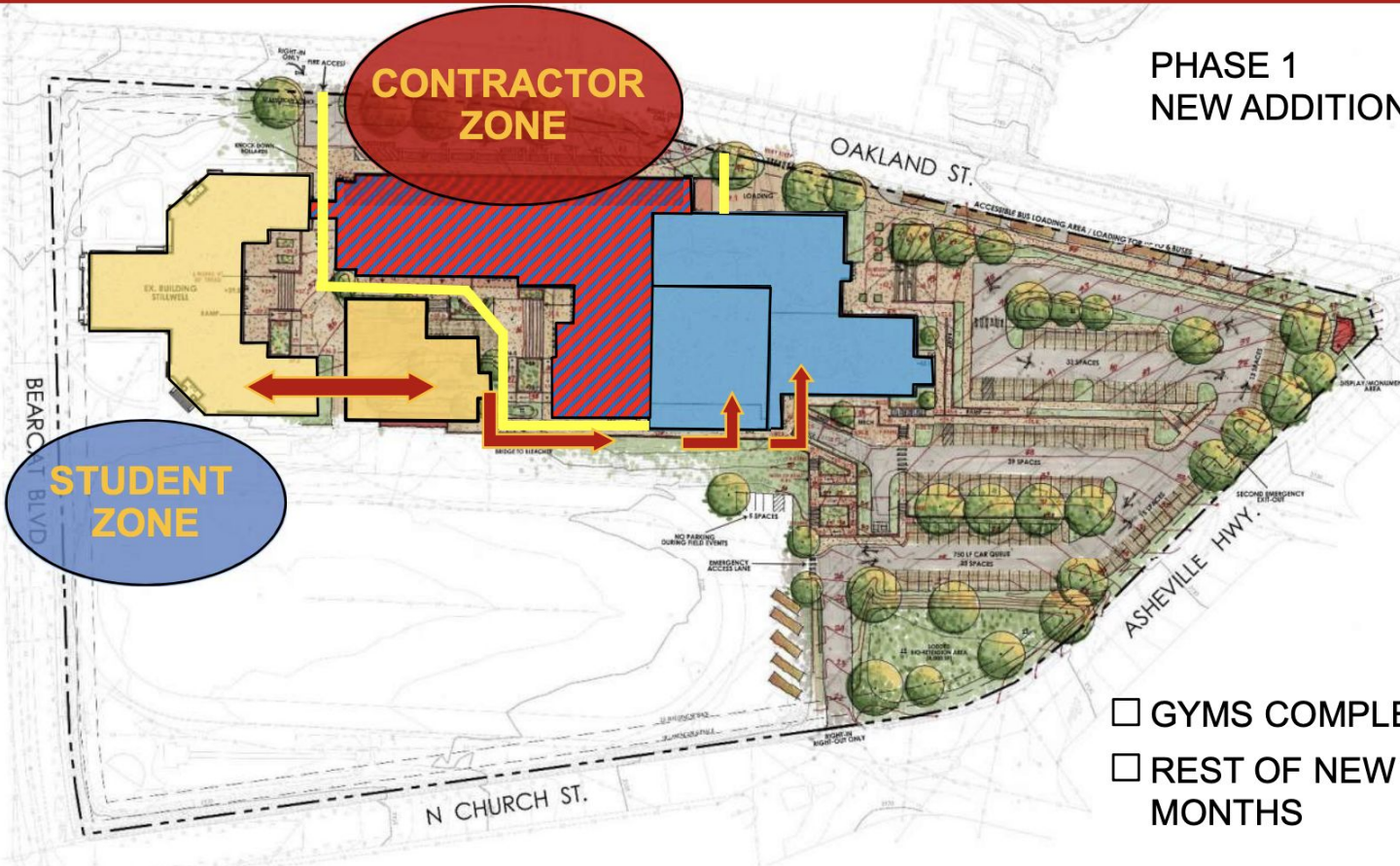
Activity	Start	Completion
Early Site and Utility Work/Minimal Vocational Reno	June 14, 2019	August 23, 2019
Serving/Dining moves into Vocational	December 20, 2019	January 5, 2020
Phase 1 Entered – Band, Cafeteria and Site Demo (No Gyms)	January 2, 2020	
Phase 2 Entered - Gyms Closed	July 1, 2020	
Move into New Gym/Aux Gym	July 1, 2021	
Move into New Addition/Additional Vocational Reno	December 20, 2021	January 5, 2022
Auditorium Closed for Renovations	September 1, 2021	March 1, 2022
Stillwell Closed for Renovations	January 2, 2022	December 20, 2022
Move into New Stillwell	December 20, 2022	January 2, 2023
Demo Vocational/Complete Courtyard	January 2, 2023	August 15, 2023

PHASING REQUIREMENTS & SAFETY MEASURES

■ PHASE 1
NEW ADDITION & GYM RENOVATIONS



PHASING REQUIREMENTS & SAFETY MEASURES

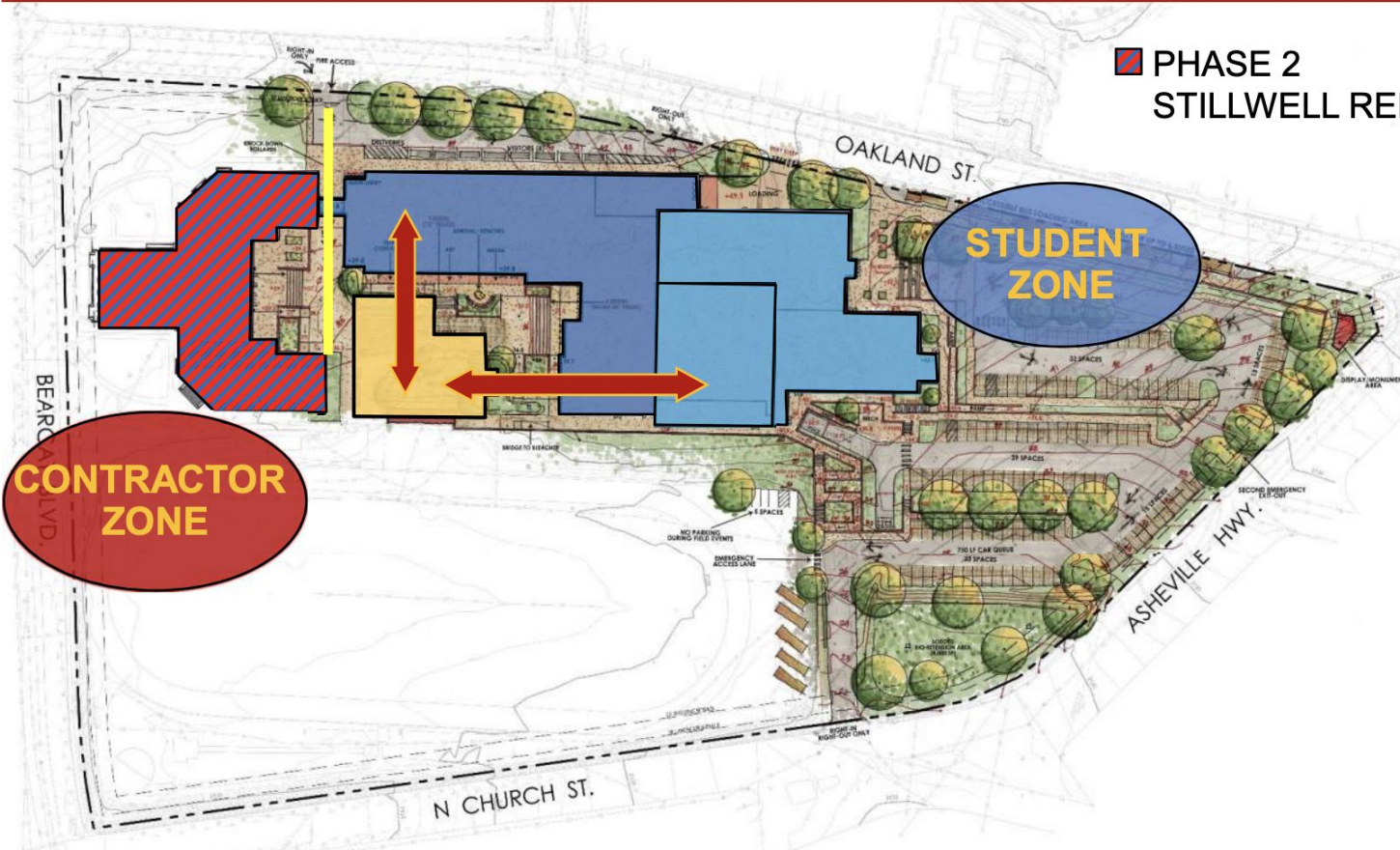


PHASE 1
NEW ADDITION & GYM RENOVATIONS

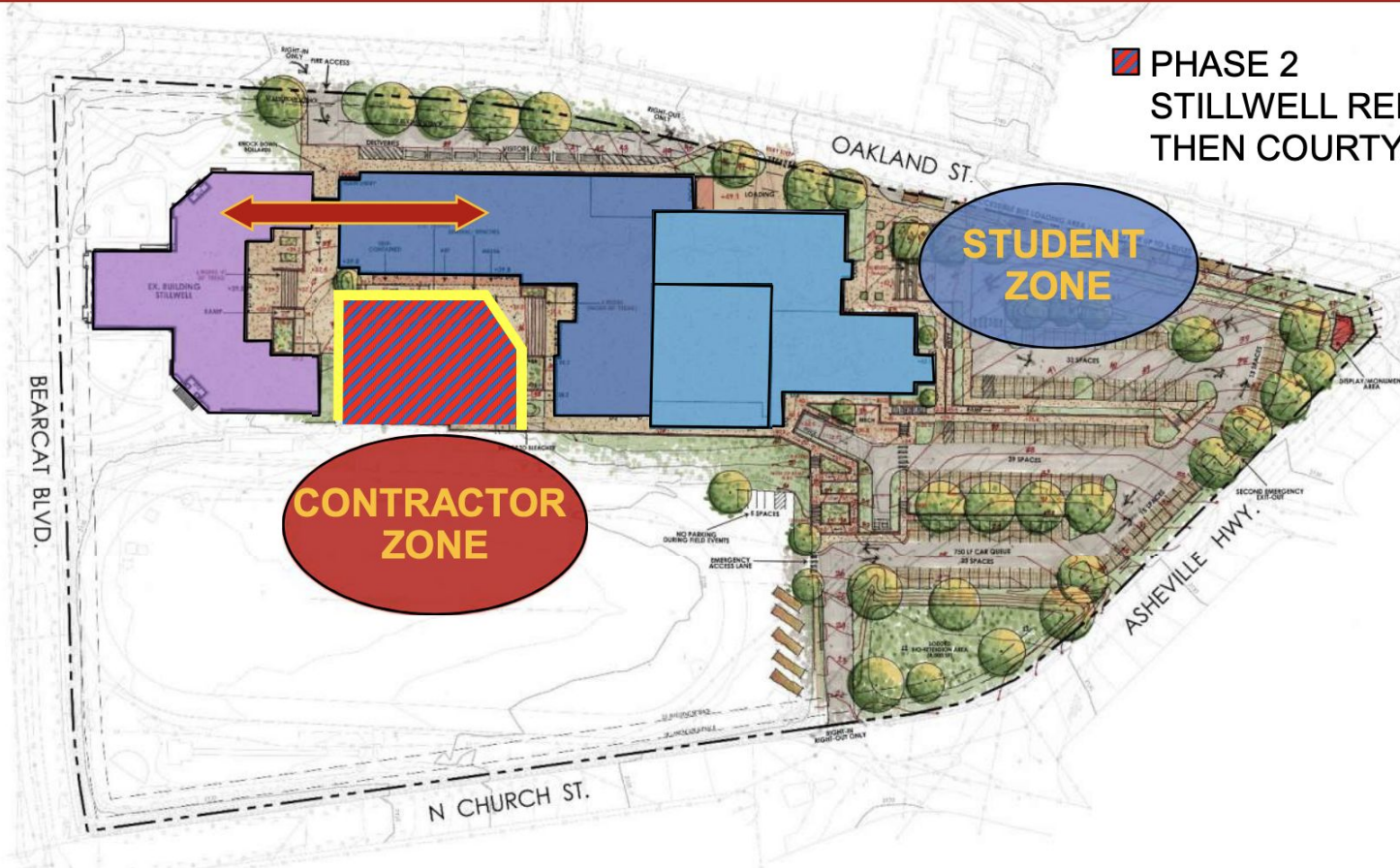
- GYMS COMPLETE AT 12 MONTHS
- REST OF NEW ADDITION AT 18 MONTHS

PHASING REQUIREMENTS & SAFETY MEASURES

 PHASE 2
STILLWELL RENOVATIONS



PHASING REQUIREMENTS & SAFETY MEASURES



THE FINAL PRODUCT

Conceptual Renderings

STREETVIEW, MAIN ENTRY ON OAKLAND



VIEW OF CAMPUS FROM NORTHWEST



VIEW OF CAMPUS FROM NORTHEAST



VIEW OF CAMPUS FROM SOUTHEAST



VIEW OF CAMPUS FROM SOUTHEAST



THANK YOU FOR SHARING THE EVENING WITH US.

John Bryant, Ed. D.

Associate Superintendent, Administrative Services

Go Dodgers!

